



5/20-22 Belmore Street Arncliffe NSW

2 1 1

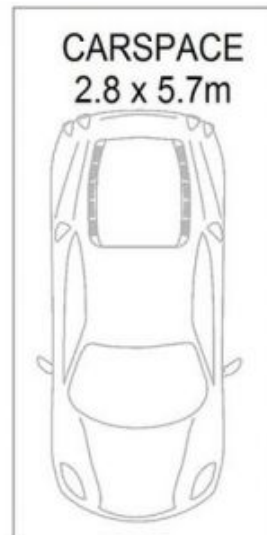
Positioned on level one of a boutique complex of 12, this unit is located moments to all lifestyle facilities. With its unique elevated position, the unit is light, bright and airy and benefits from ample storage and parking on title.

- ? Perfectly located, offering unobstructed vast district and city views
- ? Attracting 1st home buyers with no stamp duty or astute investors
- ? Generous proportions will delight with privacy, price and convenience
- ? Freshly updated throughout with new plush carpet and fresh paint
- ? Large combined living and dining rooms flowing to sunny balcony
- ? Main king bedroom with built in robe offers complete privacy

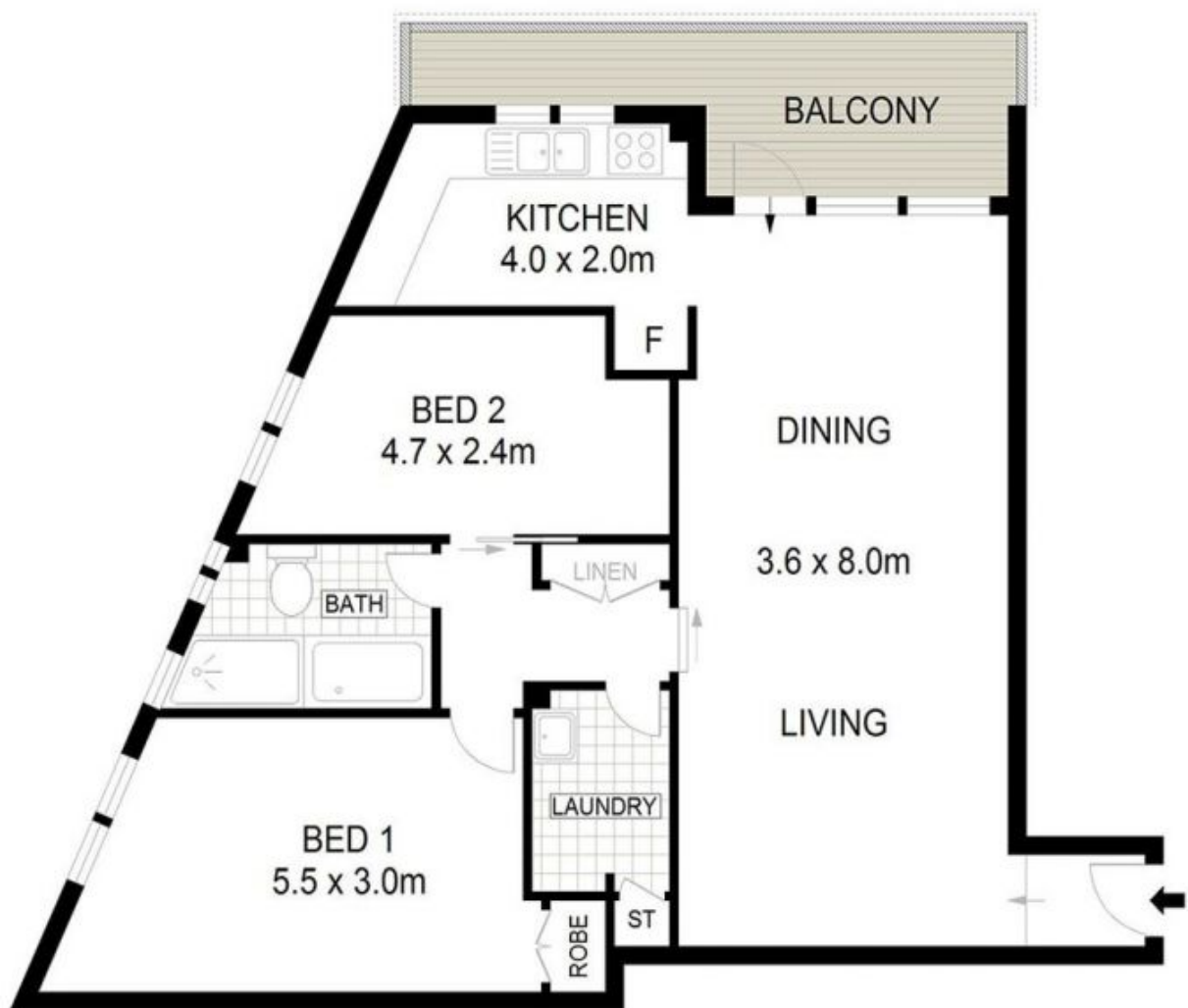
Price : \$ 595,000
Land Size : 117 sqm
View : <https://www.thepropertysellers.com.au/sale/nsw/st-george/arncliffe/residential/apartmen/5927425>



Louise Mitchell
02 9560 0088



GROUND LEVEL



LEVEL ONE