



25 Middle Street Marrickville NSW

2 1

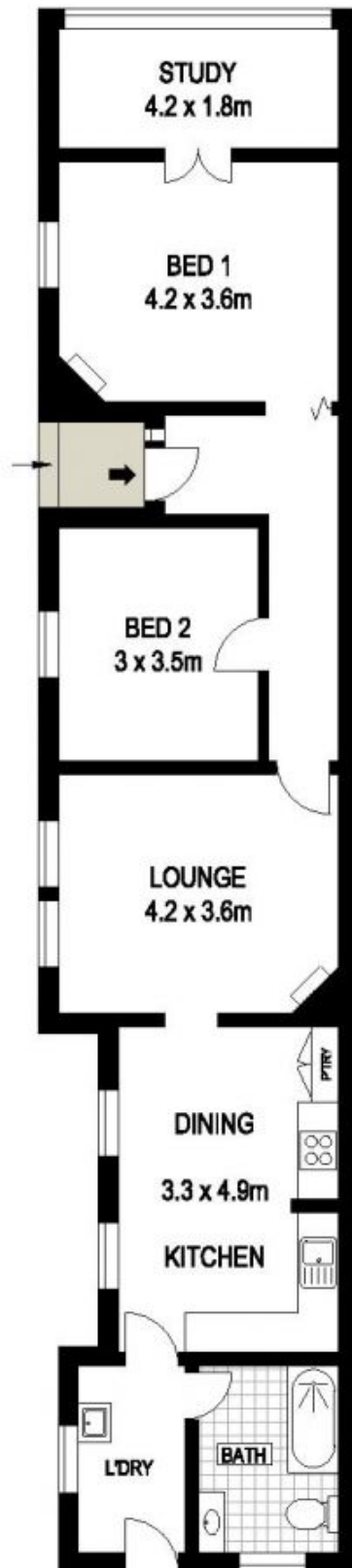
Situated in a whisper quiet location on the Stanmore border, this brick semi detached home features high patterned ceilings, polished floorboards and a tranquil private rear garden. With two generous bedrooms, decorative fireplaces and a spacious entertaining deck it is a short walk to the Sunday markets, a selection of local schools and city transport.

Price : \$ 1,245,000
Land Size : 211 sqm
View : <https://www.thepropertysellers.com.au/sale/nsw/inner-west/marrickville/residential/house/5927447>

- ? Flowing floorplan with an emphasis on natural light
- ? Two generous bedrooms, master with feature fireplace
- ? French doors compliment a home office or nursery
- ? Central living room flows to a large eat in kitchen
- ? Internal laundry and family bathroom with bath
- ? Wide entrance hallway, reverse cycle ducted air con
- ? North facing sundrenched backyard with timber decking
- ? Twelve solar panels offering energy saving all year round
- ? Central location on the border of Enmore and Stanmore



Kate Webster
0431 701 216



SITE PLAN (NOT TO SCALE)

APPROX. INT: 88m²
APPROX. EXT: 114m²