



52 Samuel Street Tempe NSW

4 🏠 2 🚗

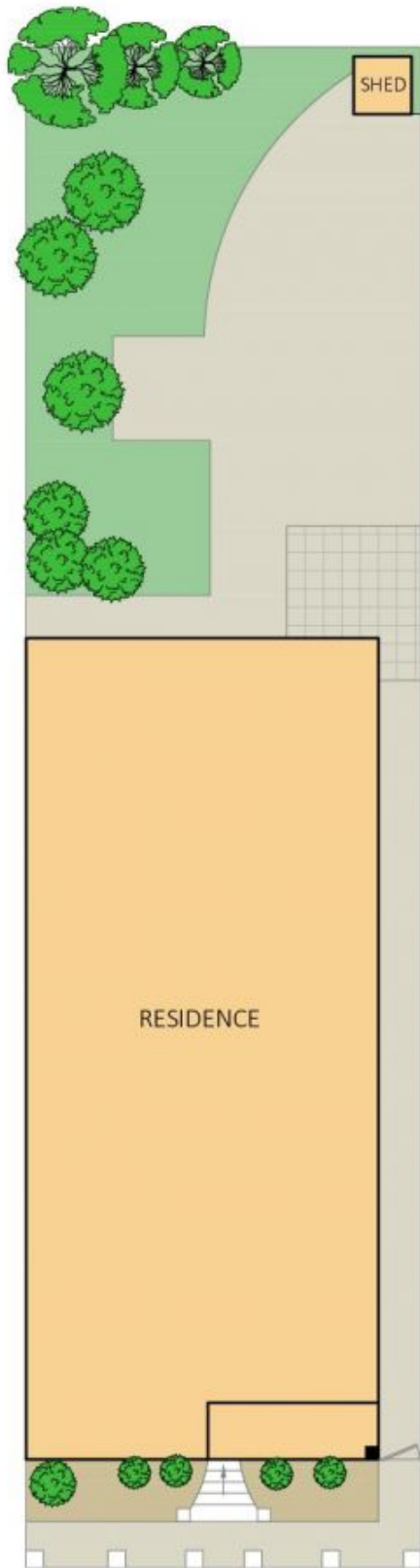
Occupying a premier position on the high side of one of Tempe's most desirable streets, this classic single level Federation home boasts a generous 311sqm (approximately) block. With a wide 9 metre frontage this property offers excellent scope to renovate, extend, create a generous family home or develop (STCA). Whilst in need of a total overhaul, the location is perfect being in a wide family friendly street just a stroll to all lifestyle amenities. This home will interest buyers seeking a renovation project or possible development opportunity (STCA).

Price : \$ 1,100,000
Land Size : 311 sqm
View : <https://www.thepropertysellers.com.au/sale/nsw/inner-west/tempe/residential/house/5927457>

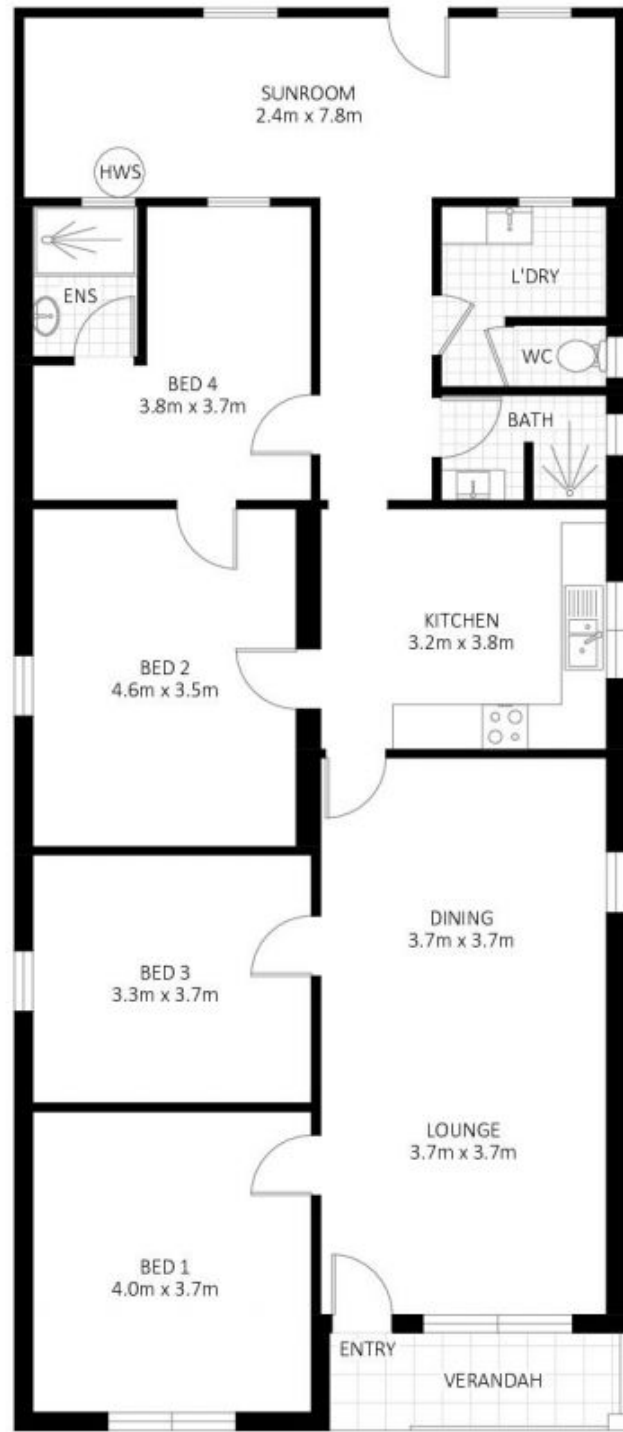
- ? Deceased Estate on the market for the first time in 47 years
- ? Unrenovated, double fronted brick home with loads of potential
- ? City glimpse from the north facing rooms
- ? Light, bright and airy throughout with large windows, high



Louise Mitchell
02 9560 0088



SITE PLAN



FLOOR PLAN