



## 29 Farleigh Street Ashfield NSW

4 🛏 2 🚗 2 🚗

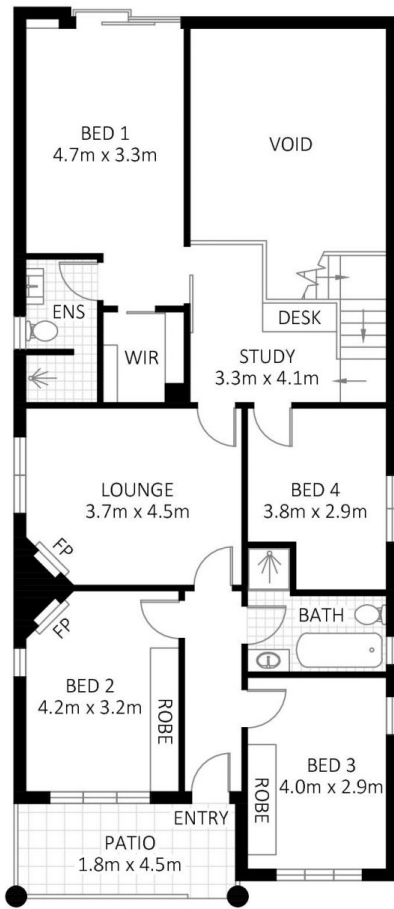
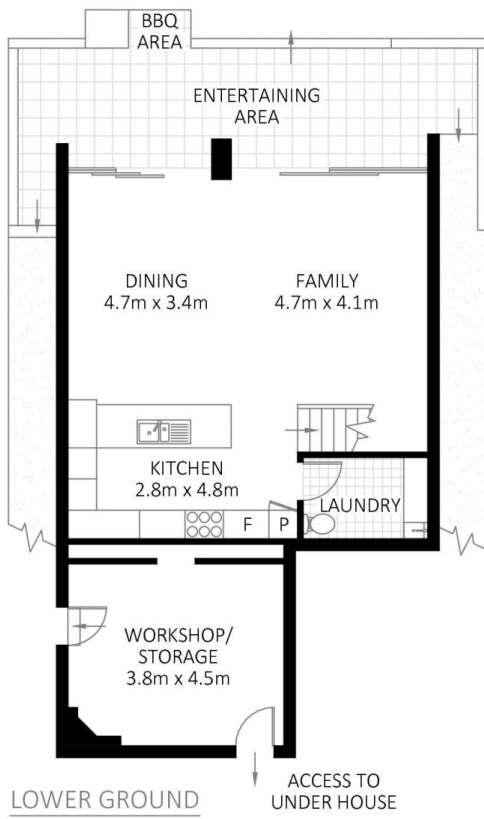
Perfectly positioned in a quiet, tree lined street on the Summer Hill border just a short walk from Trinity Grammar School, Fermoyale has been redesigned and meticulously crafted to deliver a modern masterpiece perfect for growing families.

- \* 474sqm block with level grassed backyard and rear access for 2 cars
- \* 4 carpeted bedrooms, king size master with ensuite and walk in robe
- \* Superb modern dual level extension provides abundance of natural light
- \* Chefs kitchen, stone benches, dual Bosch ovens, d/w, 6 burner gas cook top
- \* Floor to ceiling glass panels, polished concrete floors, r/c air conditioning
- \* Original features, lead light windows, picture rails, high

**Price** : \$ 2,220,000  
**Land Size** : 474 sqm  
**View** : <https://www.thepertysellers.com.au/sale/nsw/inner-west/ashfield/residential/house/5927496>



**Kate Webster**  
0431 701 216



GROUND FLOOR

