



**7 Wentworth Street Tempe NSW**

3 1

So much larger than its classic weatherboard façade suggests, this single-level freestanding home features an ultra spacious modern extension flowing to a sunny courtyard garden with separate studio and workshop. Renovated with a creative fusion of cottage style and warehouse chic, the house has three bedrooms and a living room in the original section, while the extension includes a Bali inspired bathroom, large laundry and huge open-plan kitchen/dining area with soaring 3.7m ceiling, polished concrete floor and bifold doors opening to the garden. Bright and sunny with a desirable NE rear aspect, the home is set in a quiet street with a short stroll to parklands, shopping and Tempe train station.

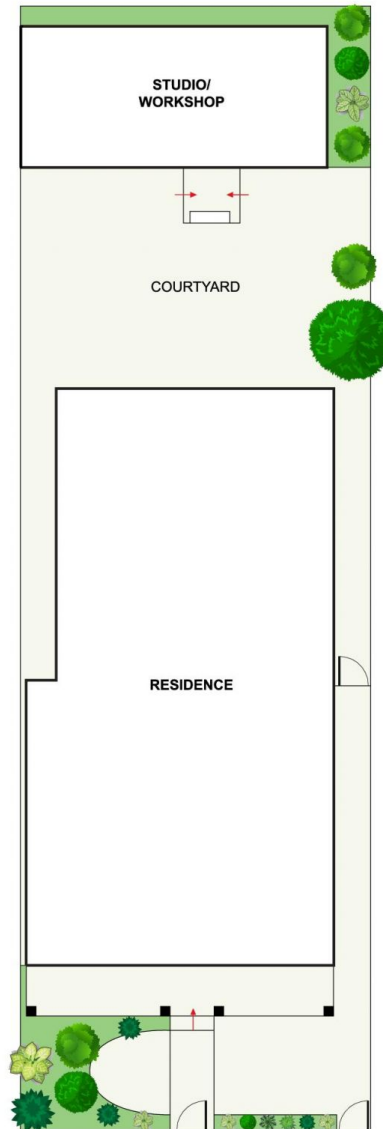
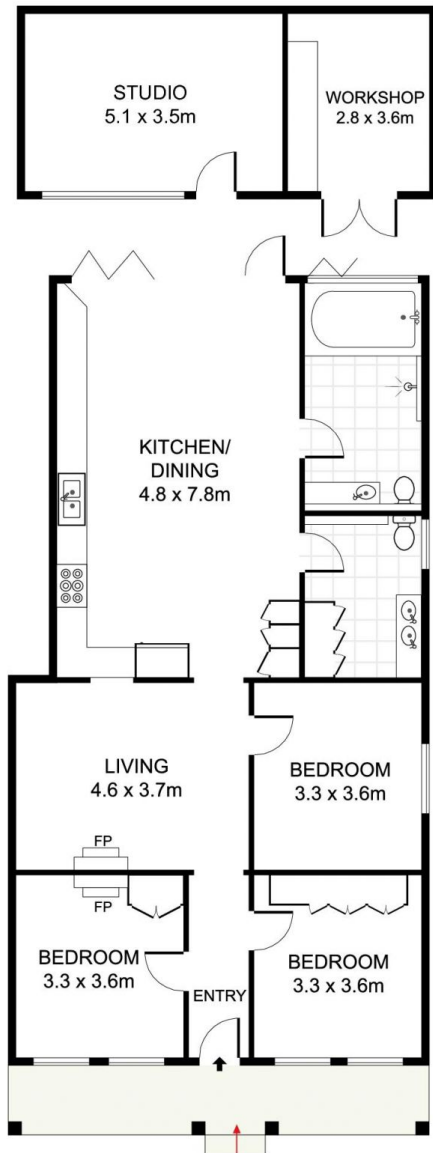
**Land Size** : 288 sqm  
**View** : <https://www.thepropertysellers.com.au/sale/nsw/inner-west/tempe/residential/house/5927524>



**Louise Mitchell**  
**02 9560 0088**

- ? Freestanding home w NE rear aspect
- ? Sunny brick paved alfresco courtyard
- ? Separate studio & workshop/storeroom

# 7 WENTWORTH STREET TEMPE



DISCLAIMER: PLANS SHOWN ARE FOR PRESENTATION PURPOSES AND ARE NOT PART OF ANY LEGAL DOCUMENT. ALL MEASUREMENTS AND FIGURES ARE APPROXIMATE.