



45 Lombard Street Glebe NSW

3 2

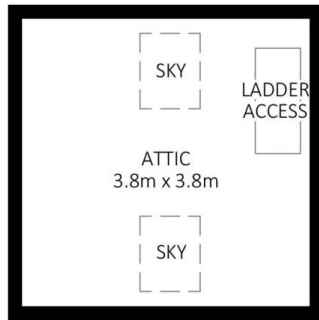
Occupying a premier position in one of Glebe's finest streets, this solid residence is ideally placed just moments to village life and the vibrant cafe culture that Glebe is famous for

- Formal lounge and dining room both feature ornamental fireplaces & polished wooden floors
- Large open plan casual living/family room with well equipped dine-in kitchen
- Three double bedrooms upstairs, bathroom with tub, huge attic storage
- Master bedroom with balcony captures magnificent city views by day & night
- Traditional features include high ceilings, intricate cornice, Victorian archways
- Second bathroom downstairs incorporates a practical laundry & storage area

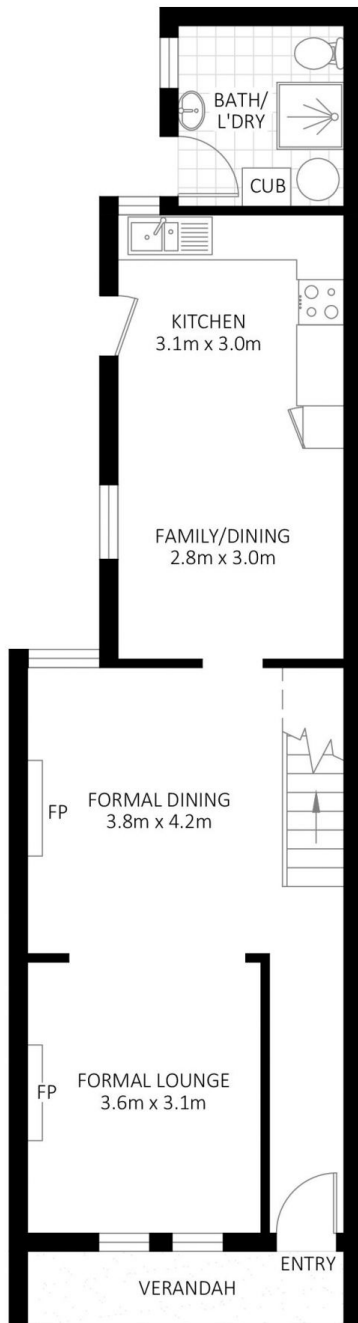
Price : \$ 1,800,000
Land Size : 130 sqm
View : <https://www.thepropertysellers.com.au/sale/nsw/inner-west/glebe/residential/house/5927539>



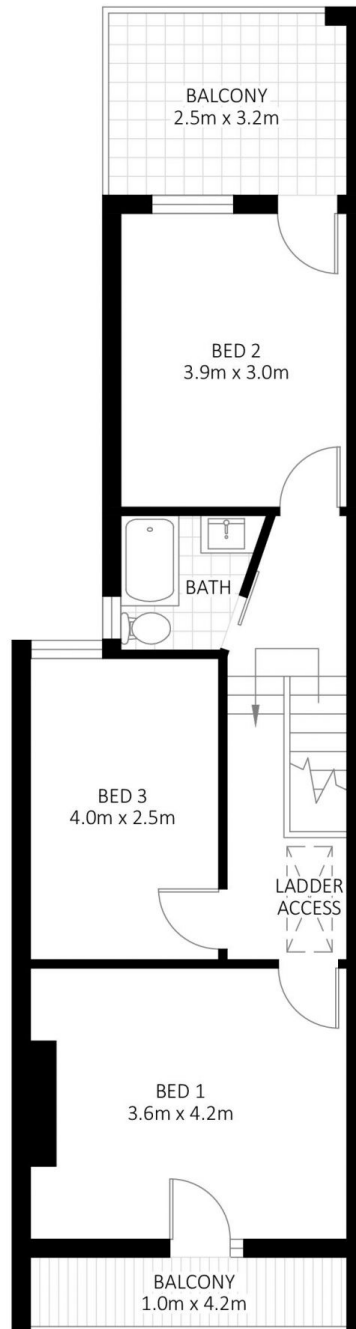
Kate Webster
0431 701 216



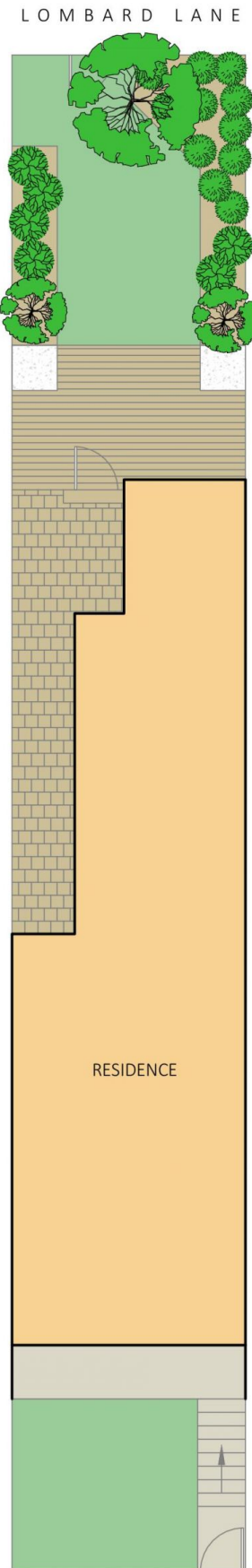
ATTIC



GROUND FLOOR



FIRST FLOOR



SITE PLAN