



## 15 John Street Tempe NSW

3 1

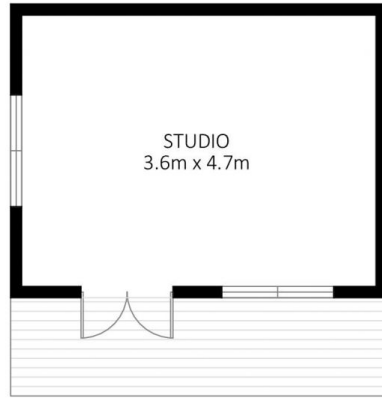
Blending a fresh modern update with classic character, this double fronted cottage delivers a premium family lifestyle in a friendly community suburb. It is smartly presented throughout and makes a great first impression with a sense of style, light filled spaces and leafy privacy. The quiet street position provides excellent convenience offering the perfect family environment with schools, parks and transport links only moments away.

**Price** : \$ 1,360,000  
**Land Size** : 306 sqm  
**View** : <https://www.thepertysellers.com.au/sale/nsw/inner-west/tempe/residential/house/5927571>

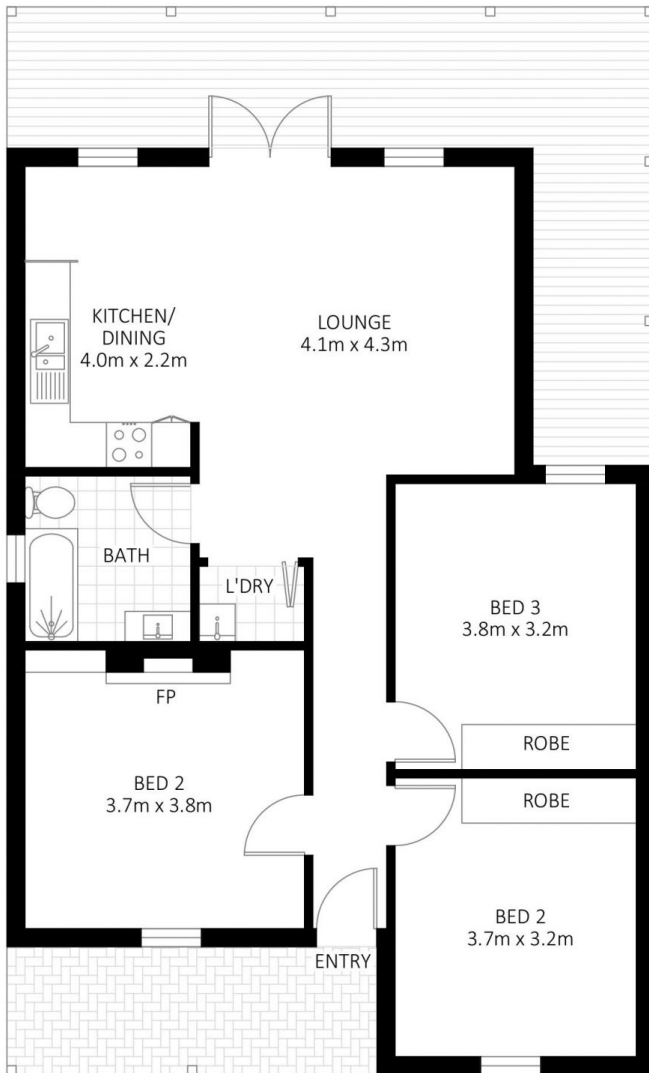
- ? Immaculately maintained period cottage, redesigned for a modern lifestyle
- ? Freshly painted throughout, new carpet; air conditioning
- ? 3 double sized bedrooms; 2 with robes; master with feature fireplace
- ? Wrap around deck, ideal for entertaining and overlooking rear garden
- ? Set on a level 306sqm block offering scope to extend



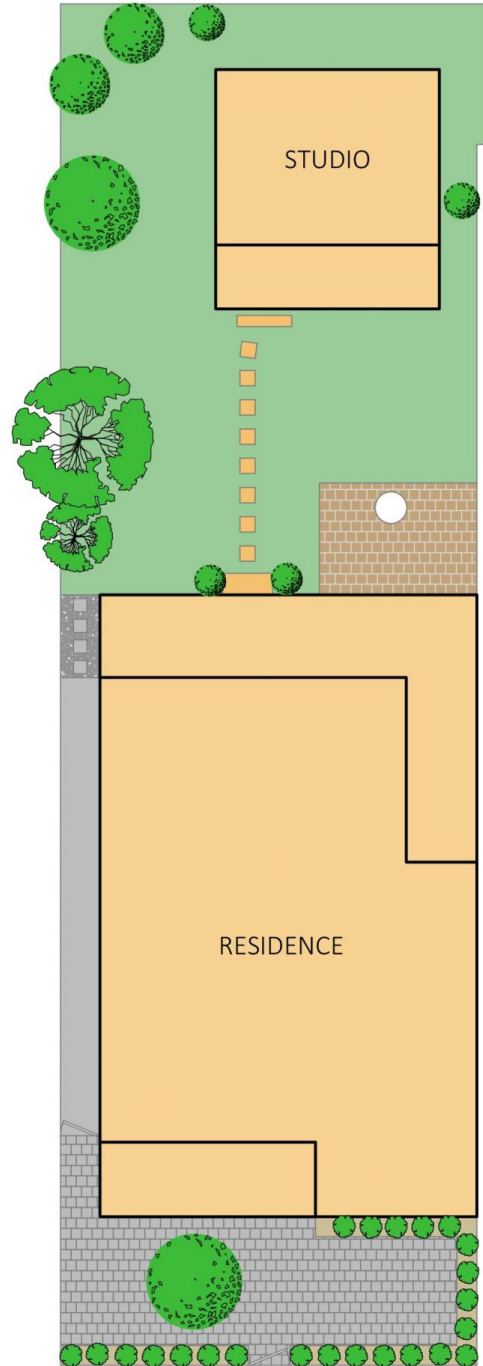
**Louise Mitchell**  
02 9560 0088



AT REAR



FLOOR PLAN



SITE PLAN