



7 Edwin Street Tempe NSW

3 1 1

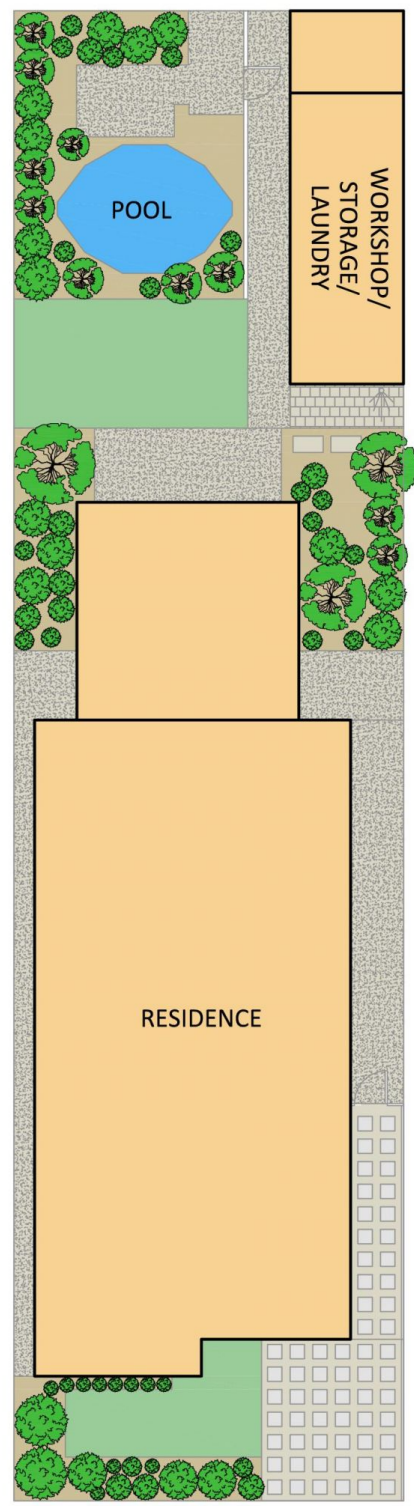
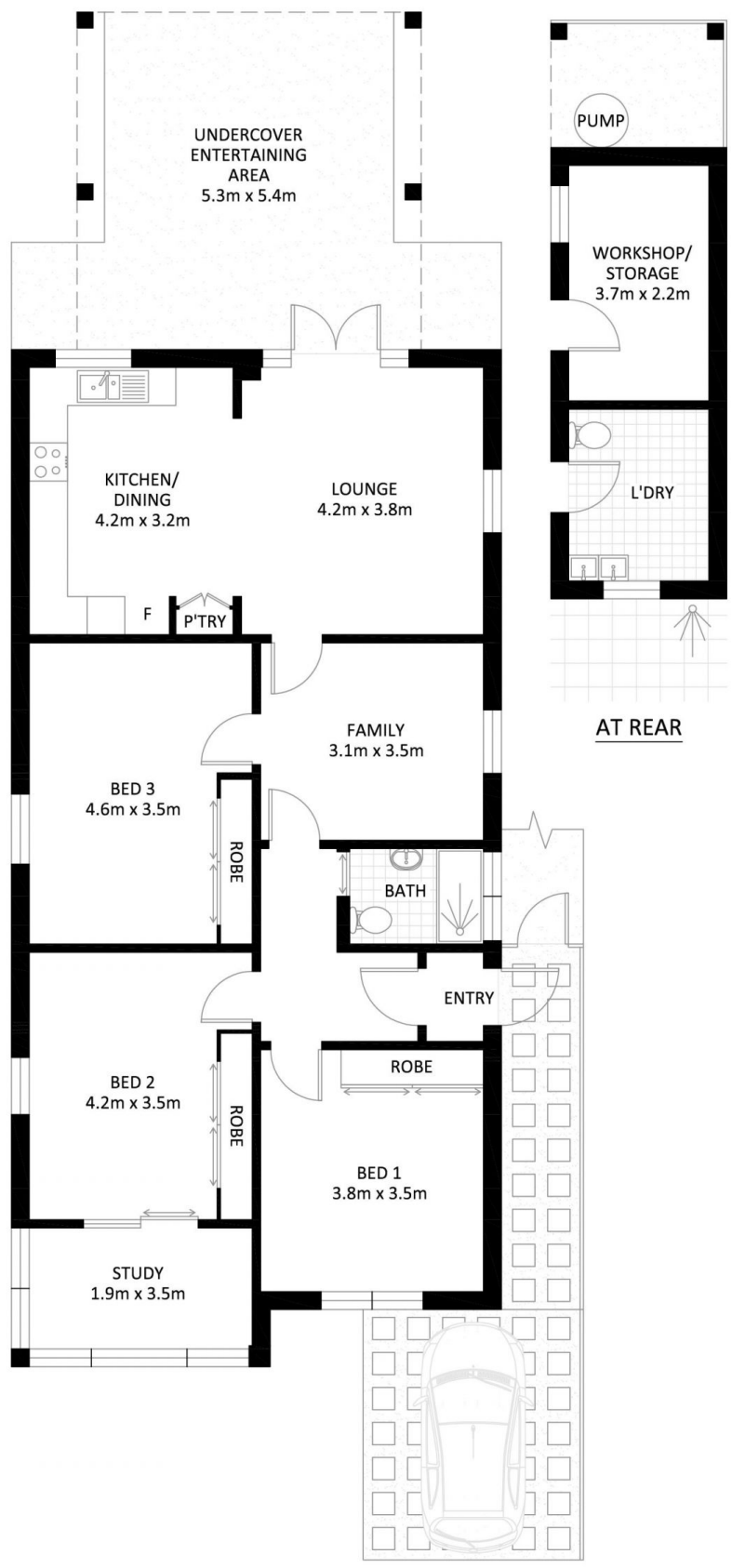
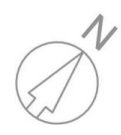
This generous double brick and tile home delivers a surprisingly spacious retreat complemented by an extra-deep leafy garden with pool. Tastefully presented to give a smart modern feel, this well-proportioned residence offers a great home with generous interiors, a large 329sqm landholding and scope to further enhance its appeal with an update or extension. Conveniently tucked away in the suburb's coveted street, this home is an oasis you will not want to leave!

- ? Double fronted home on 329sqm with off-street parking
- ? 3 huge carpeted bedrooms with BIRs; main with study
- ? Central modern bathroom; air conditioning
- ? Formal lounge or teenagers retreat; period features retained
- ? Living room opening to huge all weather entertaining patio

Price : \$ 1,400,000
Land Size : 328.8 sqm
View : <https://www.thepertysellers.com.au/sale/nsw/inner-west/tempe/residential/house/5927592>



Louise Mitchell
02 9560 0088



SITE PLAN