



## 8 Nicholson Street Tempe NSW

2 1

Immediately captivating, this freestanding cottage presents timeless charm and versatility in an environment of convenience and peace. Beyond its gorgeous facade, the home's bright and pristine interior comprises two double bedrooms, large bathroom, central lounge adjacent to the kitchen/meals area. Relax or entertain in the private garden oasis at the rear. Situated in a fabulous Tempe pocket with every city-edge lifestyle advantage at your fingertips - city-link trains, Wolli Creek precinct and parklands are all within easy walking distance.

- \* Cute cottage home in quiet cul-de-sac
- \* Immaculately presented throughout
- \* Light, bright & airy throughout
- \* Open-plan living/dining/kitchen
- \* Double bedrooms; main bedrooms carpeted with BIR's
- \* Large bathroom with internal laundry

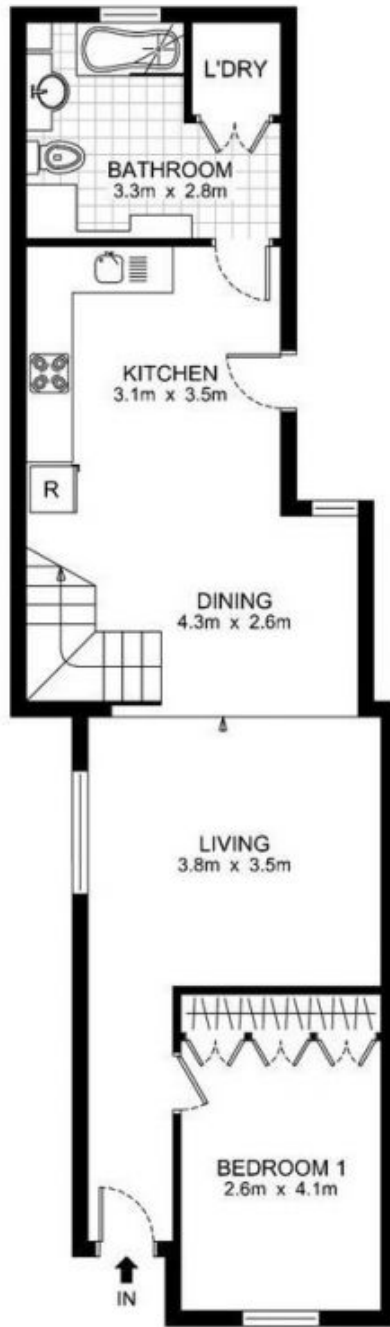
**Price** : \$ 1,075,000  
**Land Size** : 143.4 sqm  
**View** : <https://www.thepertysellers.com.au/sale/nsw/inner-west/tempe/residential/house/5927600>



**Louise Mitchell**  
02 9560 0088



SITE PLAN



GROUND FLOOR



FIRST FLOOR

**8 Nicholson Street, Tempe**

DISCLAIMER: THIS PLAN IS FOR ILLUSTRATIVE PURPOSES ONLY. DIMENSIONS ARE APPROXIMATE AND IT DOES NOT CONSTITUTE PART OF ANY LEGAL DOCUMENTS.

