

99 Unwins Bridge Road Tempe NSW

3  1  2 

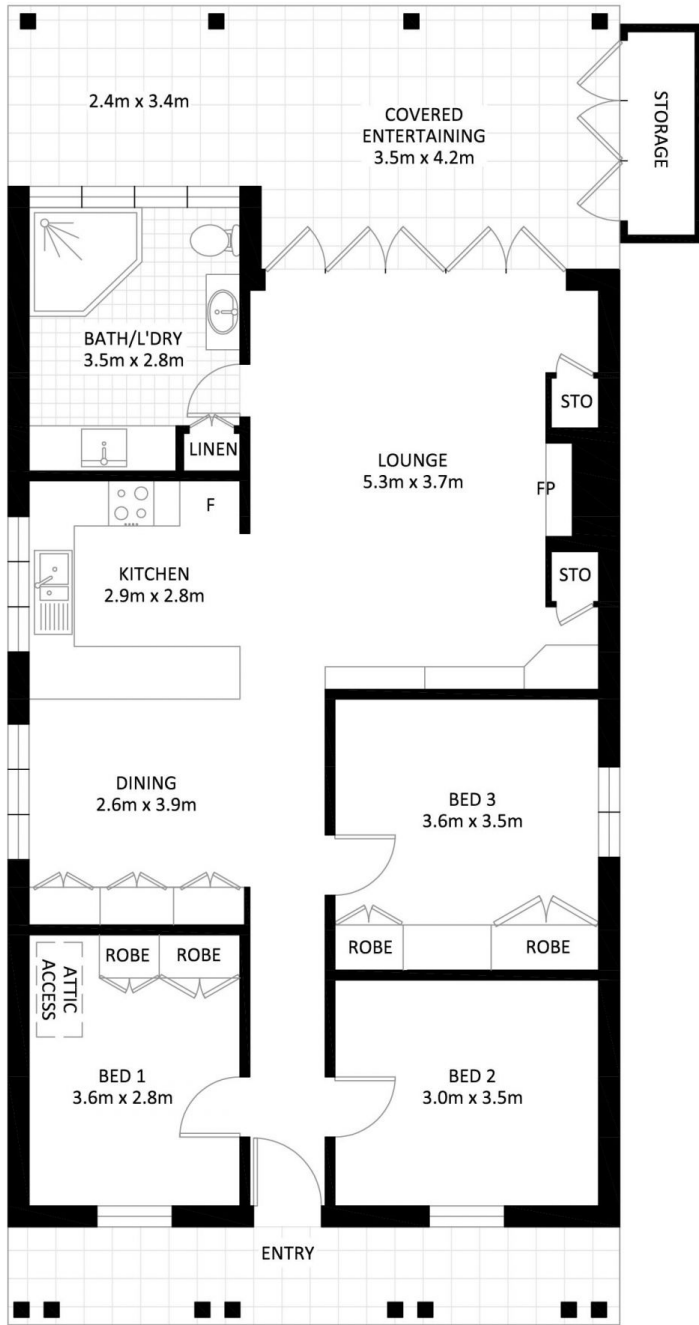
The character façade of this cottage masquerades a modern home that has been tastefully upgraded to provide an easy care living and entertaining environment. It features a generous layout and a great design for the family's in/outdoor lifestyle. This property offers the ideal solution for those seeking a turn-key home in a top location that enjoys easy access to Sydenham interchange, schools, parks and cafes.

- ? Quality finishes and an intelligent use of space
- ? Open plan living with polished concrete floors
- ? Living room with gas fireplace, flowing seamlessly to the outdoors
- ? Modern gas kitchen with breakfast bar and dishwasher
- ? 3 double bedrooms with polished timber floors; 2 with BIR's
- ? Large modern bathroom with rain shower and spa

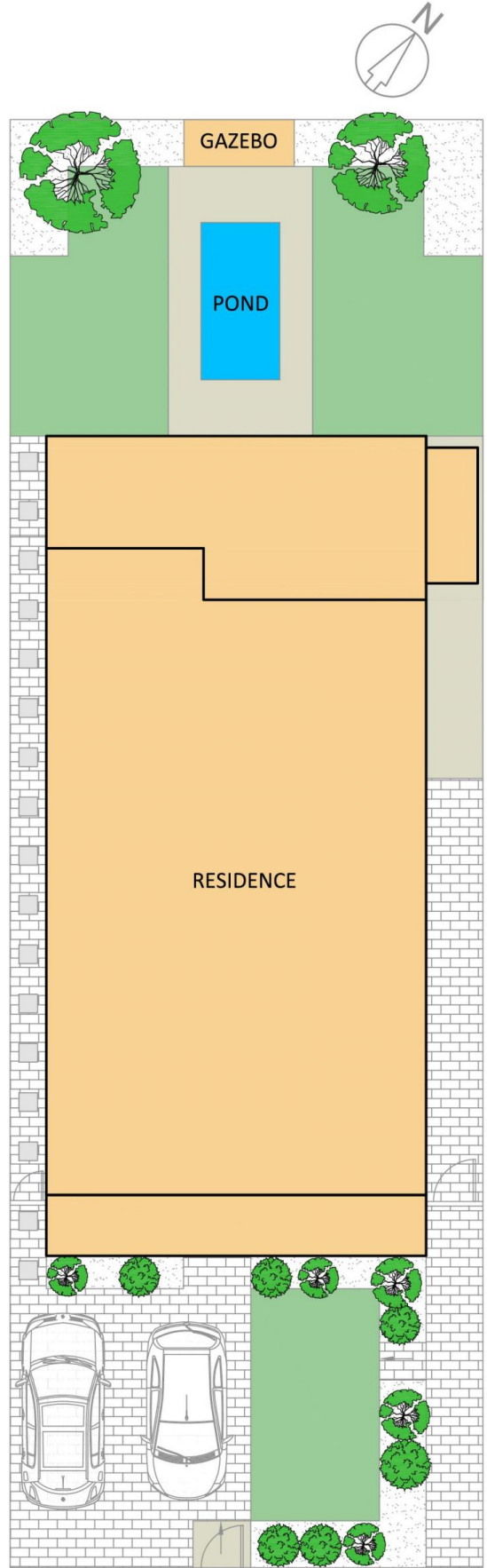
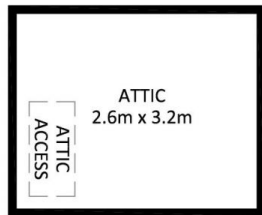
Land Size : 297 sqm
View : <https://www.thepropertysellers.com.au/lease/nsw/inner-west/tempe/residential/house/6013117>



Louise Mitchell
02 9560 0088



GROUND FLOOR



SITE PLAN