



2/24 Permanent Avenue Earlwood NSW

2 1 1

Quietly positioned in a small development and with easy access to a choice of Cooks River parklands and Dulwich Hill station, this single level villa presents like new. Offering generous interior and exterior spaces, it will appeal to those seeking the feel of a cottage at the price of an apartment.

Land Size : 154 sqm
View : <https://www.thepropertysellers.com.au/sale/nsw/inner-west/earlwood/residential/villa/6230614>

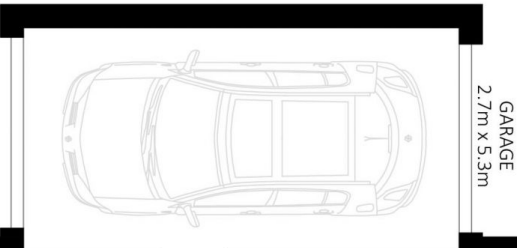
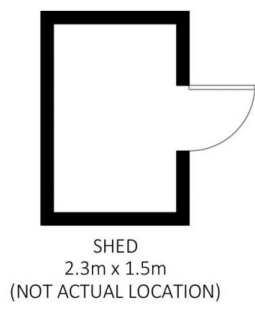
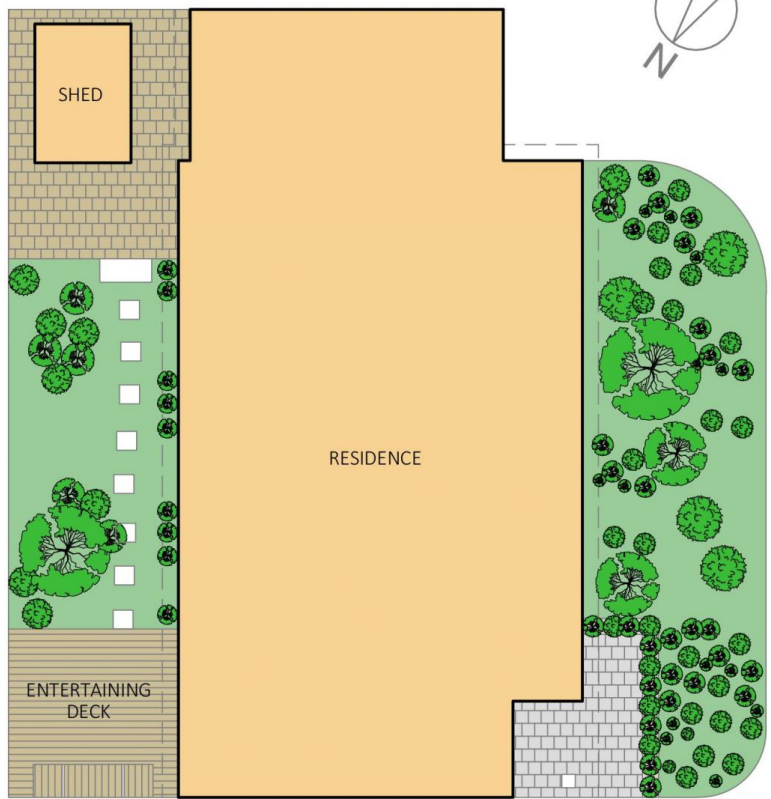
- ? Boutique development of 4 villas on 1350sqm
- ? Attractive and established front garden
- ? Large living room with adjoining dining area
- ? 2 double bedrooms with built ins
- ? Bright, modern kitchen with Caesar stone benchtops
- ? Renovated bathroom and separate internal laundry
- ? Timber flooring and neutral décor throughout
- ? Timber deck set in large landscaped rear garden
- ? Lock up garage and separate storage shed



Jonathan Ford
02 9560 0088



Robert Ford
02 9560 0088



SITE PLAN

