



81 Park Road Sydenham NSW

2 1 1

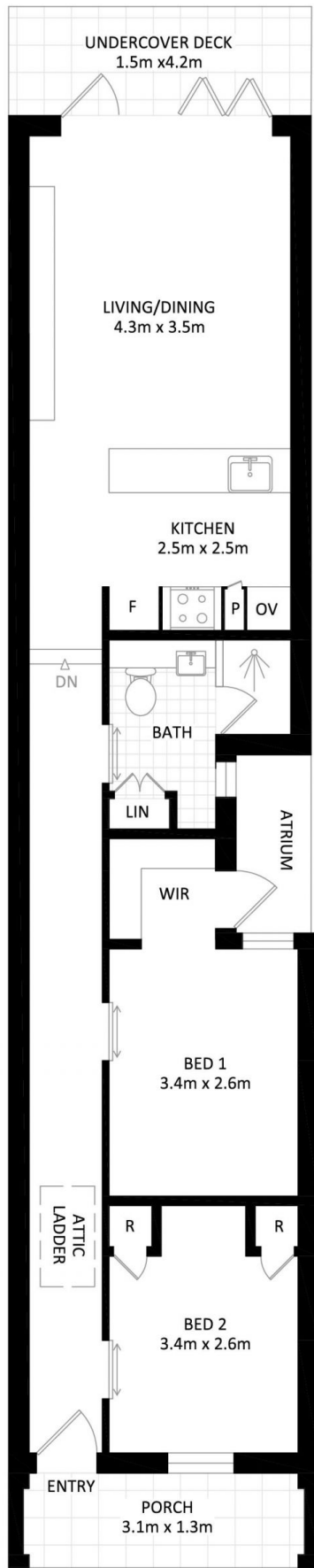
Captivating with a bold personality, this stunning home has been masterfully rebuilt maximising space, quality, and style. Incorporating a streamlined single level design with an impressive alfresco entertaining area, this home offers flexible living zones along with convenient rear lane access via a versatile lock-up garage. Ideally positioned close to transport options and cafes, this superb contemporary residence has been conceived and crafted without compromise for sophisticated and seamless indoor/outdoor living.

- ? North facing living areas flow seamlessly to private courtyard
- ? Chic Caesarstone kitchen with stainless steel appliances
- ? Large and airy modern bathroom with ample storage
- ? Double bedrooms with BIR's; main with walk in robe
- ? Converted attic via pull-down ladder with a/c & skylight

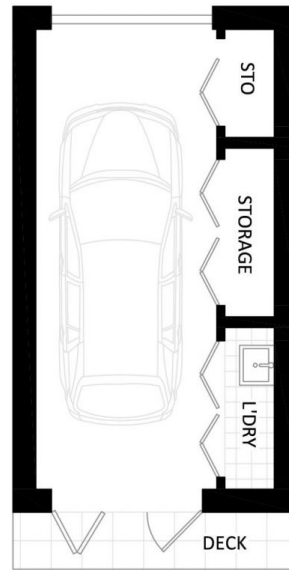
Price : \$ 1,560,000
Land Size : 139.1 sqm
View : <https://www.thepropertysellers.com.au/sale/nsw/inner-west/sydenham/residential/house/6529506>



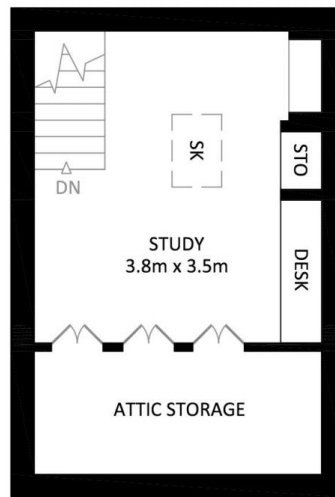
Louise Mitchell
02 9560 0088



FLOOR PLAN



GARAGE
5.6m x 2.9m
(NOT ACTUAL LOCATION)



ATTIC



SITE PLAN

