



34 Terry Street Tempe NSW

3 1 1

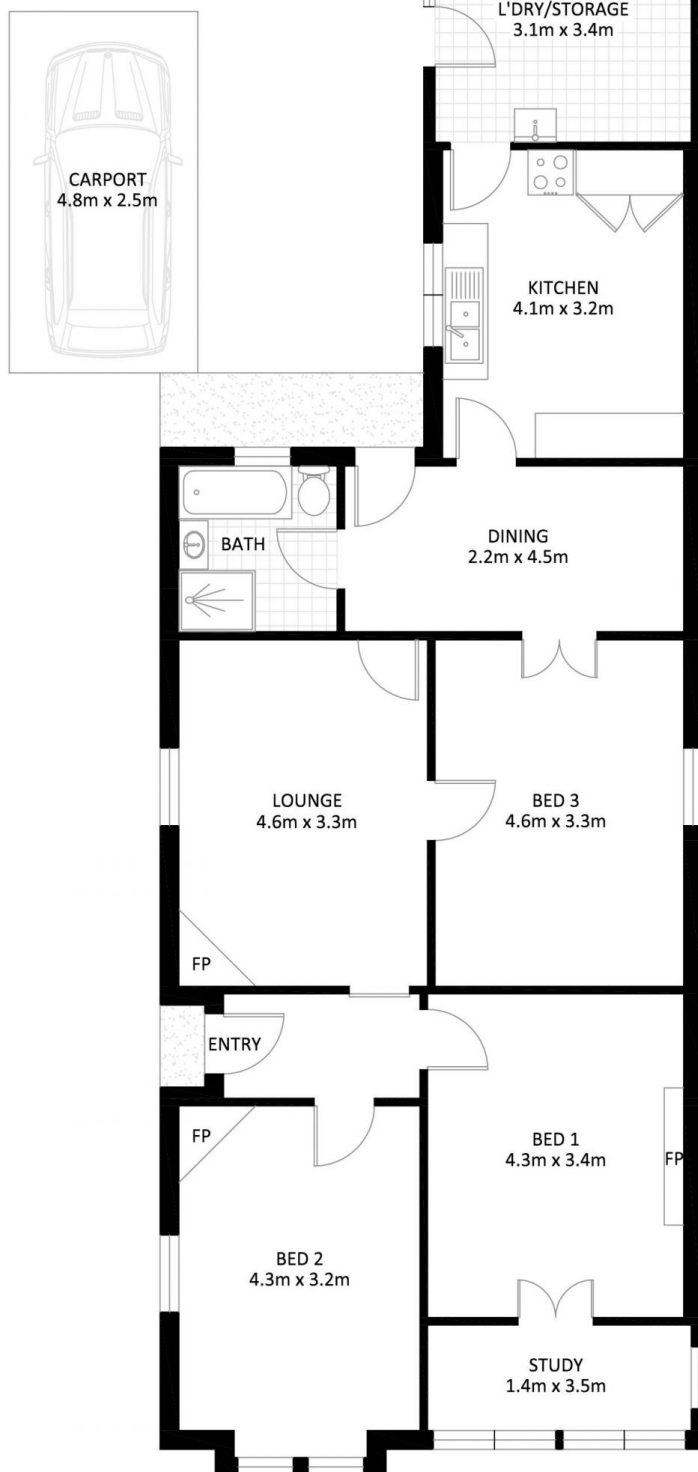
Placed in a wide tree lined street within a short level stroll to Sydenham Station and city buses, this home is presented in neat condition with a spacious sunbathed backyard.

- ? New carpet and fresh paint throughout
- ? High ceilings, marble fireplace surrounds, double glazing
- ? Three bedrooms, central living, separate dining and large bathroom
- ? Enormous gas kitchen flowing to laundry and ample storage areas
- ? Large bathroom with separate shower and bath
- ? Side driveway via gates to carport
- ? Close to schools, parks and Sydenham Village incl. the General Gordon Hotel
- ? Easy stroll to Sydenham Interchange incl. the new Metro line

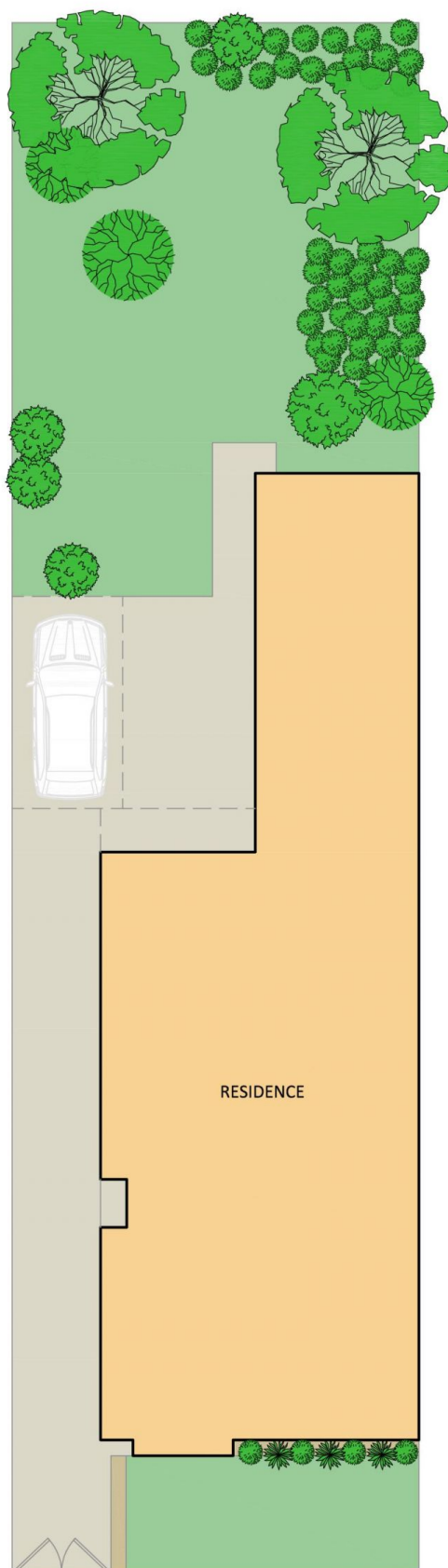
Land Size : 333 sqm
View : <https://www.thepropertysellers.com.au/lease/nsw/inner-west/tempe/residential/house/6645064>



Louise Mitchell
02 9560 0088



FLOOR PLAN



SITE PLAN