



## 344 Unwins Bridge Road Tempe NSW

2 1 1

### ENTER VIA 29 JOHN STREET

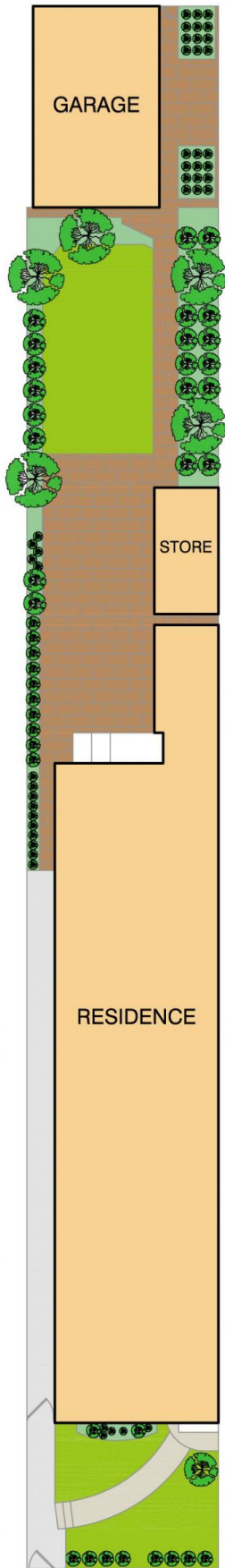
Set on a deep fenced block of 300sqm (approx) and featuring a large private garden, this spacious double brick semi detached home, offers quiet interiors via a functional single level design that is full of charm and character. Close to schools and city transport links, the home is ideal if you're looking to buy in a popular family suburb or seeking a property with scope for updating or capitalising on the dual street access.

- ? 2 street addresses, ideal work from home options
- ? Light filled throughout via north facing windows
- ? High ceilings, wide timber floors, plantation shutters
- ? Separate wide living and dining rooms
- ? Gas kitchen with separate pantry & dishwasher
- ? Oversized main bedroom with robes
- ? Large laundry and storage shed

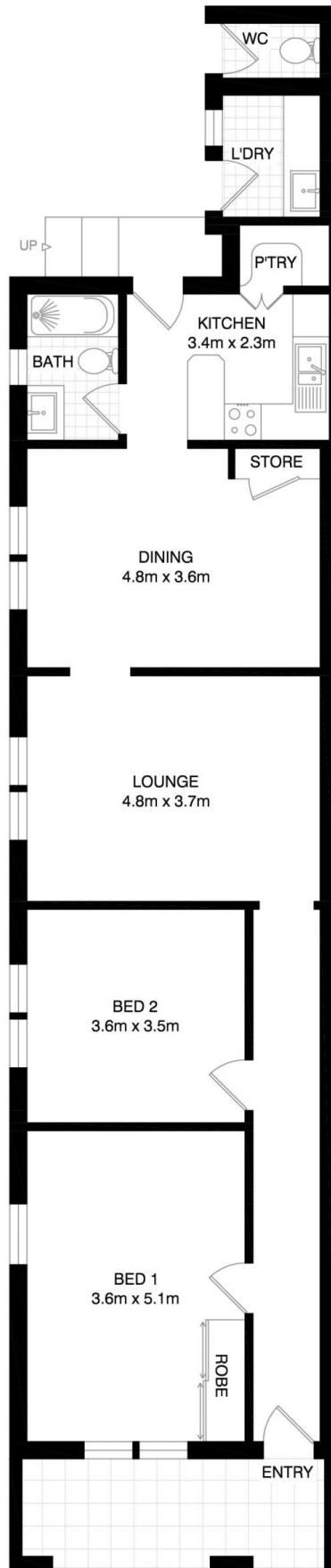
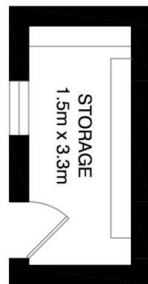
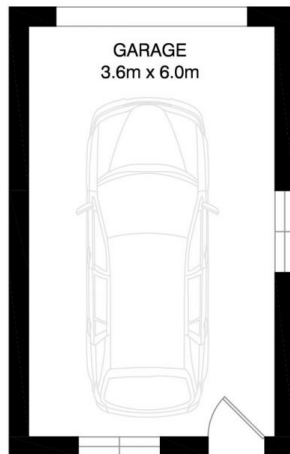
**Price** : \$ 1,615,000  
**Land Size** : 305.5 sqm  
**View** : <https://www.thepropertysellers.com.au/sale/nsw/inner-west/tempe/residential/house/6682770>



**Louise Mitchell**  
02 9560 0088



SITE PLAN



FLOOR PLAN