



## 26 John Street Tempe NSW

4 1

Enjoying a prized tree-lined cul de sac location and cleverly utilizing its well oriented 272sqm, this light filled freestanding residence provides an easy indoor to outdoor flow. Offering 3 separate living zones and a choice of workspaces, it's the perfect contemporary family home.

**Price** : \$ 1,970,000  
**Land Size** : 272 sqm  
**View** : <https://www.thepropertysellers.com.au/sale/nsw/inner-west/tempe/residential/house/6753948>

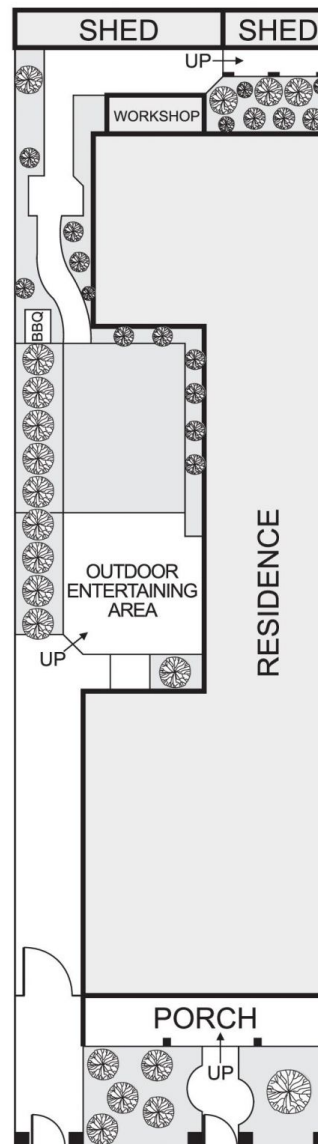
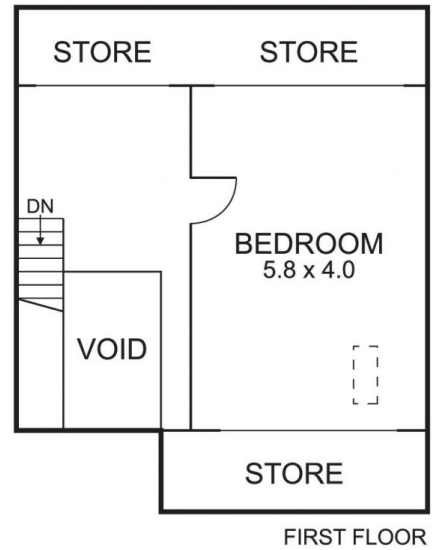
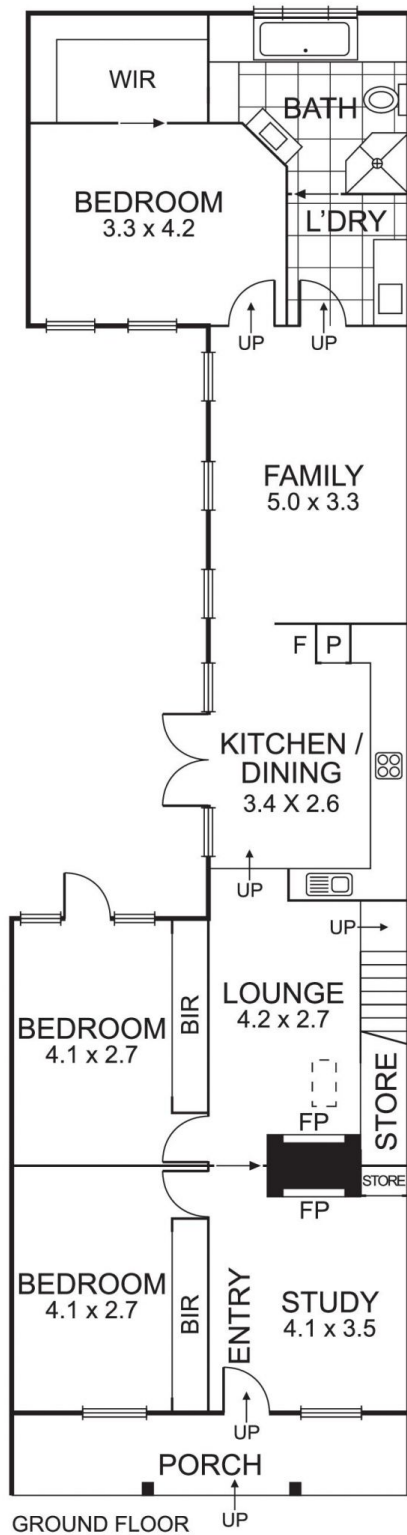
- Wide front verandah overlooks established garden
- Entrance with casual sitting room/home office
- 4 bedrooms or 3 with an additional living area
- Separate lounge room with private garden outlook
- Stylish eat in kitchen flows to louvred timber deck
- Separate dining or casual living room
- Mezzanine with adjacent lofted bedroom
- Easily adaptable to one large space
- Parents retreat with walk in robe and adjacent bathroom
- Warm interior with timber floors and thoughtful use of glass
- Extensive storage and workshop facility



**Robert Ford**  
02 9560 0088



**Jonathan Ford**  
02 9560 0088



Disclaimer: All dimensions and areas stated are approximate only and should not be taken as a definite. In order to satisfy yourself of the exact dimensions of the property, land, or each room, we advise you to conduct your own measurements and/or engage the services of a licensed surveyor. Responsibility for any omissions or errors contained herein is expressly denied.