



8 Wentworth Street Tempe NSW

4 1

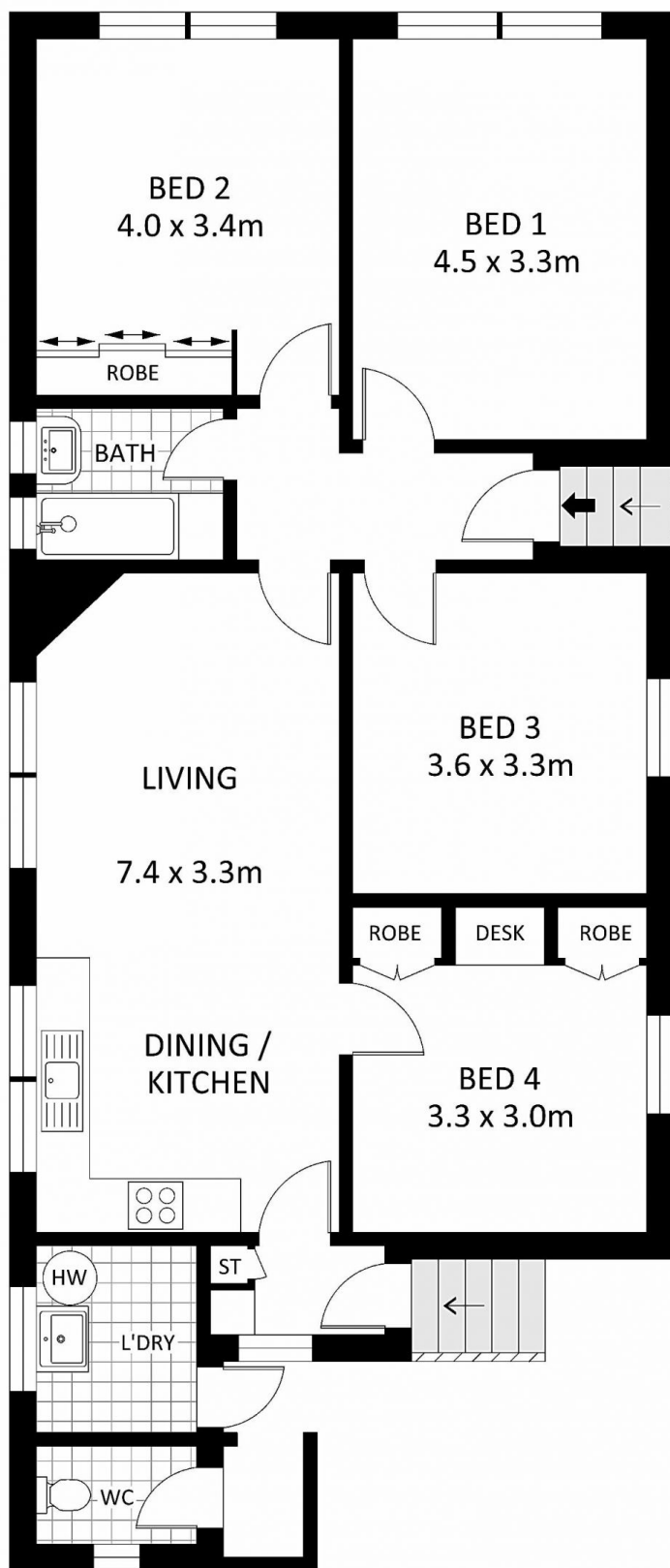
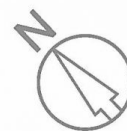
First time on the market since the home was built in 1952, this single level classic currently offers great proportions and all the right bones for rejuvenating or renovating. The sizeable and level rear garden tempts the thought of a contemporary extension (STCA), while for now the home is solid, clean and liveable.

Price : \$ 1,475,000
Land Size : 286.4 sqm
View : <https://www.thepropertysellers.com.au/sale/nsw/inner-west/tempe/residential/house/7708756>

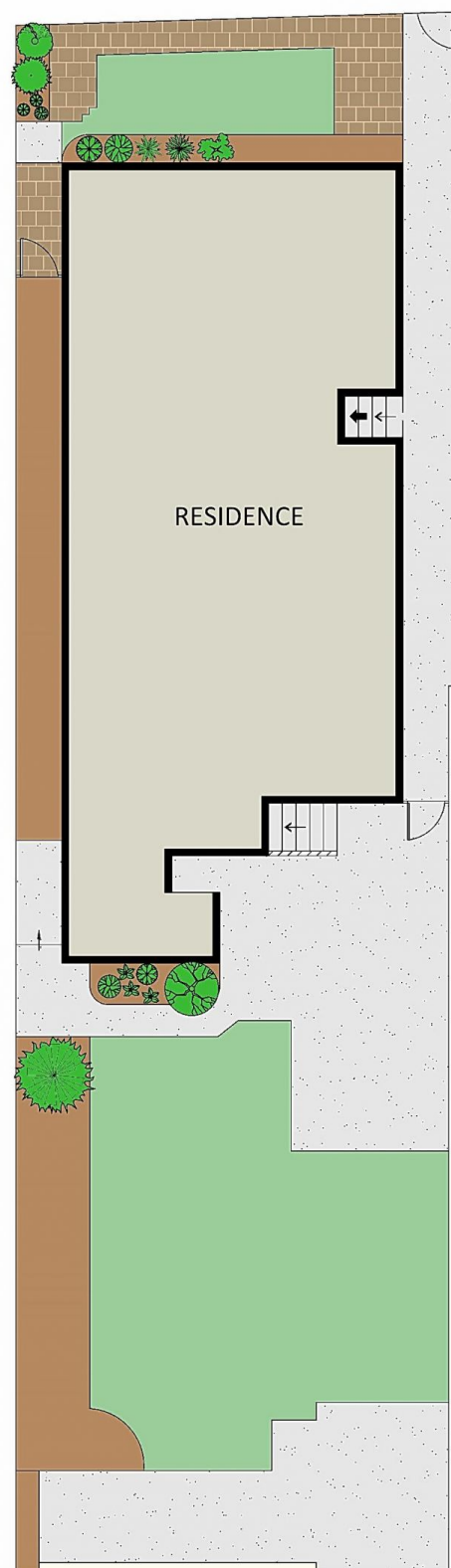
- ? Freestanding solid brick & tile home on level block
- ? Live in ready with scope to update & extend (STCA)
- ? 4 generous size bedrooms, 2 w/ BIRs
- ? Light, bright & airy combined living/dining/gas kitchen
- ? Classic high moulded ceilings, lead-light windows, retro tiles
- ? Central bathroom; laundry with utility space
- ? Rear sunny yard with dual side access; new fencing
- ? Close to Tempe wetlands, reserves, Cooks River, Wolli Creek & transport



Louise Mitchell
02 9560 0088



FLOOR PLAN



SITE PLAN