



## 46 Terry Street Tempe NSW

2 1

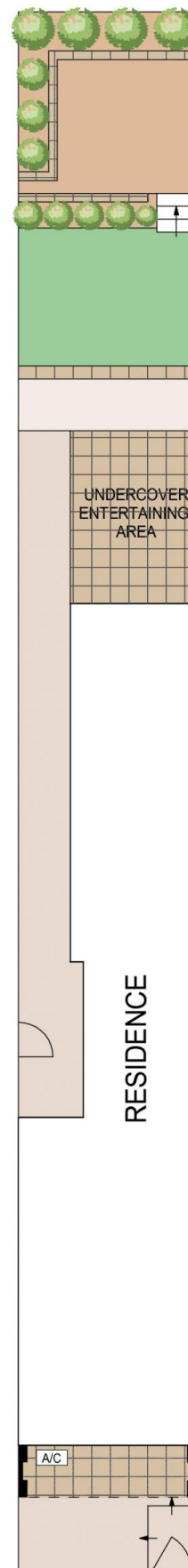
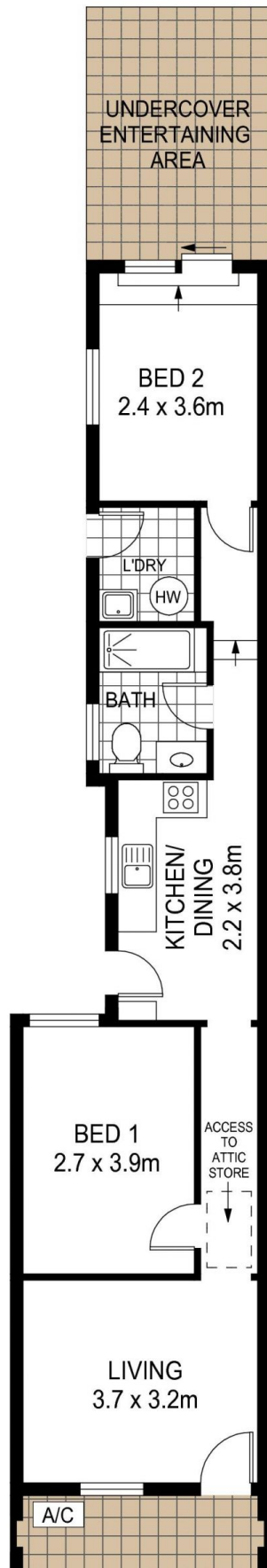
An affordable entry to the inner west market, this stylish Victorian semi has been tastefully renovated throughout, offering a fabulous lifestyle that's perfect for professionals, 1st home buyers and investors alike. Impeccably presented throughout, this home has approved DA plans to extend up, capitalising on this popular location.

- ? DA approved plans to extend
- ? Popular tree lined street
- ? Freshly updated throughout
- ? Main bedroom with feature raw brick wall
- ? Fresh kitchen with new appliances
- ? Central bathroom with bath/shower
- ? Private alfresco entertaining
- ? Landscaped garden w/ lawn
- ? Air conditioning, double glazing, attic storage
- ? Close to Sydenham Station, city buses, schools & cafes

**Price** : \$ 1,345,000  
**Land Size** : 145 sqm  
**View** : <https://www.thepropertysellers.com.au/sale/nsw/inner-west/tempe/residential/house/7777800>



**Louise Mitchell**  
**02 9560 0088**



SITE PLAN